

---

## TA0075 - White LED Module



### Introduction

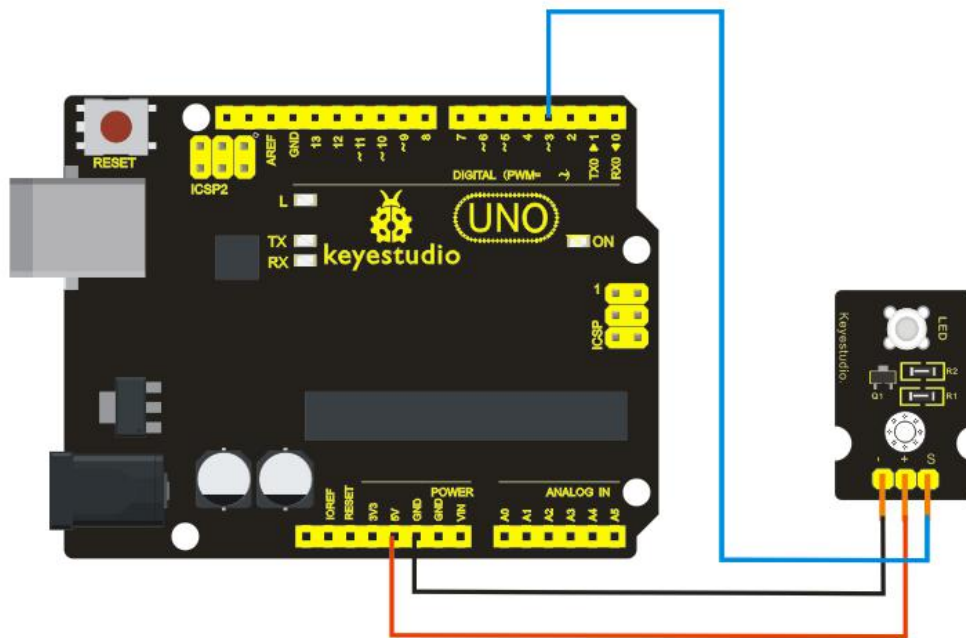
This is a special LED module. When you connect it to ARDUINO development board, after programming, it can emit beautiful light. Of course, you can also control it using PWM. It will look like fireflies at night. Sounds cool? You can also combine it with other sensors to do various interesting interactive experiments.

Note: You can also choose other LED to emit different color of light like yellow, red, green and blue.

### Specification

Module type: digital  
Working voltage: 5v  
Distance between pins: 2.54mm  
Size: 30\*20mm  
Weight: 3g

### Connection Diagram



### Sample Code

```
int led = 3;
void setup()
{
  pinMode(led, OUTPUT); //Set Pin3 as output
}
void loop()
{
  digitalWrite(led, HIGH); //Turn off led
  delay(2000);
  digitalWrite(led, LOW); //Turn on led
  delay(2000);
}
```