

A large, solid red circle is centered on the page. Inside the circle, the text "XVR KITS" is written in a bold, white, sans-serif font. Below it, the text "Quick Operation Guide" is written in a smaller, white, sans-serif font.

# **XVR KITS**

## Quick Operation Guide

Please read the Quick Operation Guide carefully before using the product and keep it.

## Statement

Thanks for purchasing our products. If you have any questions or need, please contact us directly.

This manual is used for POE NVR and POE cameras in the kit.

The contents of this manual will be updated according to our products improvements.

And updated contents will be added in new versions of this manual without prior notice.

If description in this guide does not conform to the product, please be subject to the product.

## Safety Precautions

1. Please modify default password promptly after the equipment is installed, to avoid being stolen.
2. Please do not place and install the equipment in direct sunlight or near heating equipment.
3. Please do not install the equipment in wet, dusty or soot-burning places.
4. Please keep the equipment horizontally installed or installed in a stable place, avoid the equipment falling down.
5. Please do not drop and splash liquid on the equipment and ensure no objects filled with liquid on the equipment and prevent liquid from leaking.
6. Please install the equipment in a well-ventilated place and do not block the vents of the equipment.
7. Please use the equipment within rated input/output range only.
8. Please do not disassemble the equipment without notifying supplier.
9. Please transport, use and reserve the equipment in permissible range of humidity and temperature.

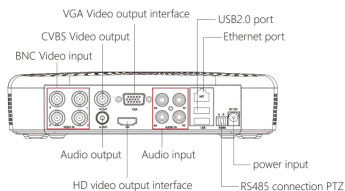
## Disclaimer

Please pay special attention to the following exclusions or restrictions:

1. If the product is terminated for any of the following reasons, our company shall not be liable for any personal injury or property damage to you or third parties:
  - A. The installation or use of equipment is not strictly in accordance with the requirements.
  - B. State or public interest.
  - C. Majeure.
  - D. Your own or third-party reasons, including but not limited to the use of third-party products, software, components and so on.
2. Our company does not guarantee the equipment for special purposes or use in any express or implied way. This equipment shall not be used for medical/safety equipment or other products which can cause life hazards and personal injury applications or dangerous uses of weapons of mass destruction, biological and chemical weapons, nuclear explosion and any unsafe use of nuclear energy or contrary to humanitarian purposes. Any loss or liability arising from such use shall be borne by you.
3. This equipment can perceive specific illegal invasion in correct installation and use, but it can not avoid accidents or personal injury and property loss caused by this. In daily life, please be vigilant and strengthen the awareness of safety precautions.
4. We are not liable for any consequential, accidental, special or punitive damages, requests, property losses, data losses and documents losses. In the maximum extent permitted by law, our liability for compensation shall not exceed the amount paid by you when purchasing this product.

# Product Rear Panel description

XVR rear panel interface description : BNC Video input, CVBS Video output, Audio output, VGA Video output interface, HD video output interface, Audio input, Ethernet port, USB2.0 port, RS485 connection PTZ, power input, as below :



Notes: Images for instruction use only, the final goods are subjected to the real object.

## XVR Kits Quick Operation Guide

XVR Kits Installation free wiring, plug and play, no need to set up, easy to install. Start the installation guide step into:

### Installation Guide:

#### Step1 : Installation Preparation

Install XVR hard drive. Before installation, make sure that the power is turned off.

Installation tools: Cross screwdriver (please use the device manufacturer recommended XVR dedicated monitoring hard drive)



Loosen the screws on the base plate and remove the upper cover.



Align the screw holes on the hard disk with the screw holes on the base plate and tighten the hard disk to the bottom with screws.



Align the cover against the base and gently close it. Tighten the top cover to the floor with screws.

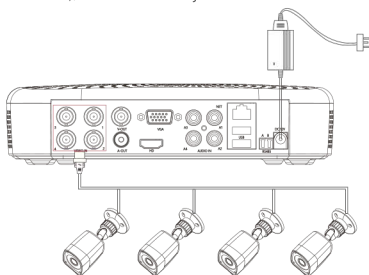


Plug in the hard drive cable and power cable.

Notes: Images for instruction use only, the final goods are subjected to the real object.

## Step 2: Connect the device

Use the 5ch power cable splitter to connect with the power supply, and another end connect with XVR recorder and the HD camera power supply. XVR recorder will preview the screen via the BNC cable. default (XVR address: //192.168.1.88), the connect way as below:

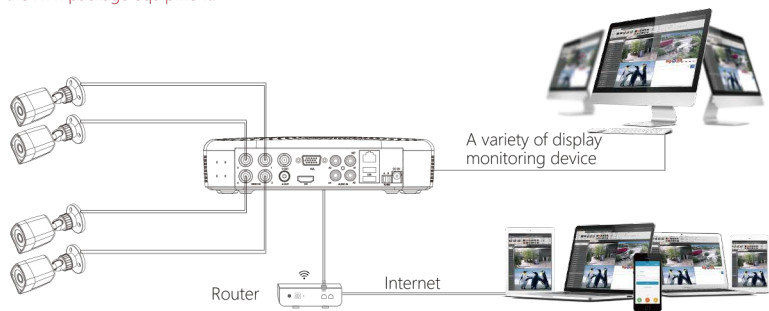


Notes: Images for instruction use only, the final goods are subjected to the real object.

※ Note: The analog camera provides a live preview screen by accessing the BNC connector of XVR

To confirm that the XVR kit is working. Connected the XVR with the display, HD camera access XVR via the BNC, XVR and the camera plug in the power supply, no need any operation, because it has been configured successfully when finished production, when the display appears on the analog camera video, Normal, no need other operation.

Note: The product configuration power adapter voltage is 48V, please ensure that the power supply (100V ~ 240V) normal, not below or above the power supply range, otherwise it will seriously damage the XVR package equipment.

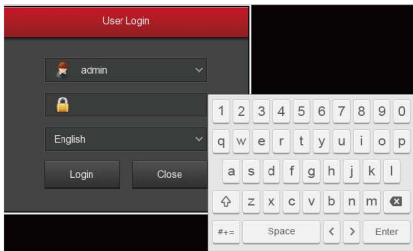


Notes: Images for instruction use only, the final goods are subjected to the real object.

# System Login

Start up the XVR, right click the desktop and enter the user login interface.

Input the user name and password. System default user name : " admin" , Password : "12345".



## Preview

Enter preview interface after device start up. Preview interface include date and time of system, and channel name. Login system, double left click to switch between full screen and multi-screen.

### Menu basic operating instructions

1. Enter the menu mode

Login system, right click to popup shortcut menu.

Left click **【Menu】**, enter the main menu interface.

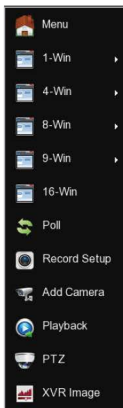
Left click **【Playback】**, enter playback operation interface.

Left click **【Record Setup】**, enter record setting operation interface.

2. Exit the menu mode

Right click to exit the menu mode.

In the menu mode, right click to return to the previous menu (also for other menus).



# Shortcut menu introduction

Click the right mouse button pop-up shortcut menu, shortcut menu consists of the following three parts:

Preview mode: Select the preview mode in the menu bar you like.

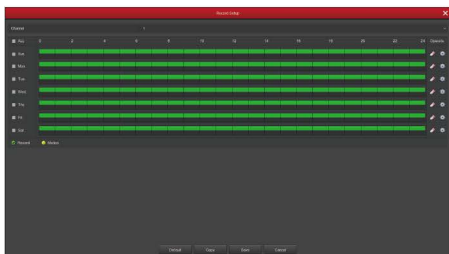
Shortcut menu mode: In the menu bar wheel tour, video settings, add equipment, video playback, PTZ settings and XVR image color, you can directly enter the appropriate menu.

Main menu : Click to enter after the **【Playback】** , **【Export】** , **【HDD】** , **【Record】** , **【Camera】** , **【Configuration】** , **【Maintenance】** , **【Shutdown】** .

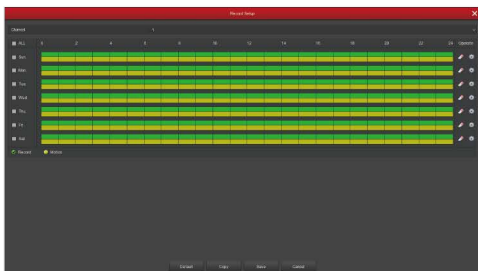


## Record

- 1、HDD formatting. Make sure the hard disk is detected and works well. (You can check status of HDD from menu "HDD" )
- 2、 In the shortcut menu, click **【Record】** , enter the video settings interface, or in the main menu, click the left mouse button **【Record】** to enter the video settings interface, NVR default all time ordinary Video.

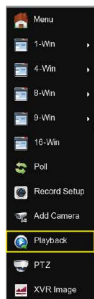


3、Motion Detection Setting. Enable "Motion" to activate motion recording, motion sections have no more than 6 times each day. If the setting of manual record and motion record are overlapped, it can only save the motion records while motion detection comes up.

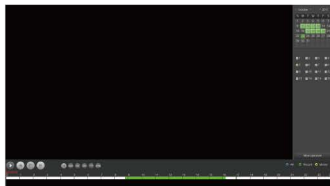


## Playback

Enter "Playback" interface by clicking "Playback" from shortcut or main menu, select channels and search the record files and playback what you want.

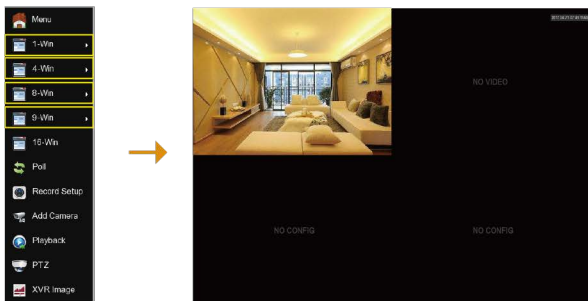


or

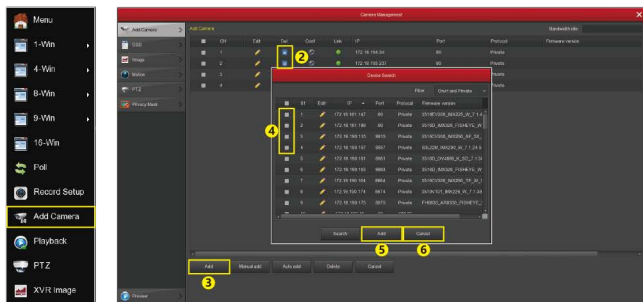


# Live View

Left click **【1-Win】 / 【4-Win】 / 【8-Win】 / 【9-Win】** in the menu, and enter real time view interface, can add one or more cameras monitor pictures at the same time.



2、XVR kits default match cameras device, connect all the devices to XVR, power on, connect the monitor device, then can real time preview, if you change the cameras default IP address, need to add again the devices to the XVR.



As picture above, left click to enter adding device interface with the shortcut menu, or choose "Channel" in the main menu - "Add Camera"

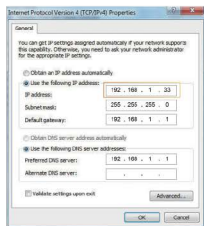
- ① Connect the power to XVR and HD cameras, HD cameras connect XVR BNC connector through BNC cable.
- ② If you have added the device before, pls select the added device first.
- ③ Click "adding" in the menu, enter adding device interface, this interface will search the device automatically and will show the device that already searched.
- ④ Tick the device that you want to add.
- ⑤ Click "Add".
- ⑥ Click "cancel" and return the last interface.



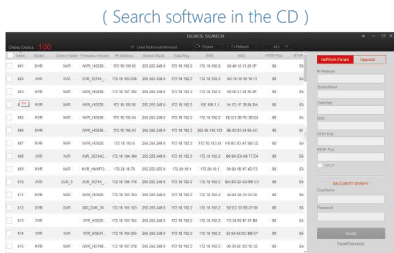
# Webpage XVR Login

## 1、Login XVR LAN( Same router in same computer, also named intranet)

- ① Connect PC with LAN of XVR with internet, confirm XVR and computer with the same network segment. If computer do not have the network segment, need add one same network segment with XVR. For example: '192.168.1.33'( Note: XVR default IP address is 192.168.1.88).
- ② Open IE browser, choose Tool- internet item-safe-default level-ActiveX Controls and plug-ins, All choose start using.
- ③ Search XVR or open IE Browser input XVR address Trought Search Tool( CD contents): for example http://192.168.1.88( if XVR port 80 change to be other, need add the new port).
- ④ Login XVR Default User :**admin**, password : **12345**
- ⑤ Preview XVR through PC , Click player button in the bottom interface of 'LiveVideo'.



①



③

(First connect need download and install plugin)



④



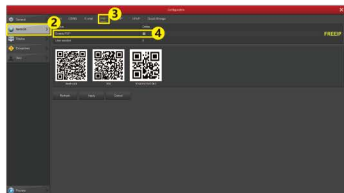
⑤-1



⑤-2

# P2P access XVR

1. When you make sure the XVR already connect the network, enter the main menu **【Configuration】** - **【Network】** setting, enter "P2P", click "Start P2P" until it show "On line".
2. Type <http://www.freeip.com/> in the browser that the network can work in outer net, login account-configuration management-quickly adding device(type the device serial number(XVR main menu-network-P2Pinterface can check the XVR serial number)),user name(admin), password(12345)-My FREEIP-choose adding device, preview real time videos(Remark: The first time login the web need to download the OCX first, then you can view the videos).



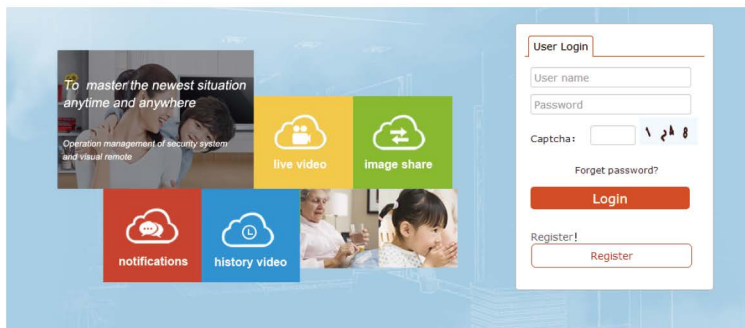
Enter **【Configuration】** setting in the main menu

Chose **【Network】** in the **【Configuration】** , enter "P2P"-click "Start P2P"-Show "On line"



## Freeip

Language : English ▾



# Mobile APP access XVR

Download and install FREEIP to you mobile phone through the ways as below:

- 1、 Type "FREEIP"to search in 360 store by Android phone or APP store by IOS ohone.
- 2、 Scan the QR code as below correspondingly.
- 3、 Type the website in your mobile phone as below correspondingly.



Android

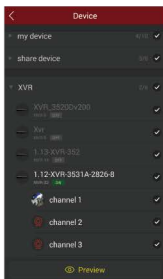
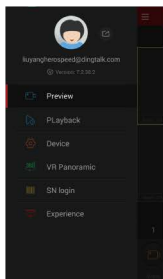
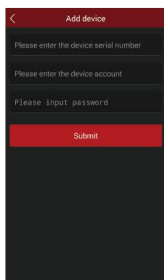
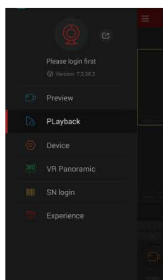


ios

Android App download address : <http://www.freeip.com/some file/Freelp.apk>

IOS APP download address : <https://itunes.apple.com/cn/app/freeip/id898690336?Mt=8>

Start FreeIP APP(New user need to register an account to log in, if you have FreeIP PRO account you can log in directly), adding the device according to the steps as below, and preview the videos.



1. Click **【Device】** to add the device.
2. Click the button of the interface **【+Add device】** , select " the serial number add" into QR code scanning interface.
3. Scan the QR code on the device sticker or poster on the webpage to add the device.
4. Enter the user name and password,and then click **【Submit】** .
5. Click **【Preview】** .
6. Click **【+】** to enter **【Device】** interface.
7. In **【Device】** , please choose the device you want to preview, then click **【preview】** .
8. You can choose different definitions in the preview interface.