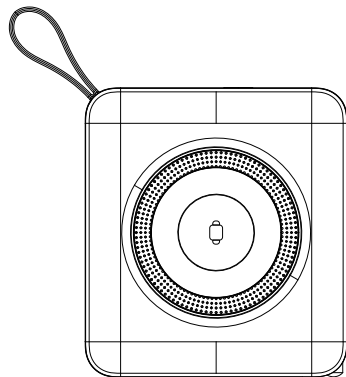


POWERTRON A 0319A

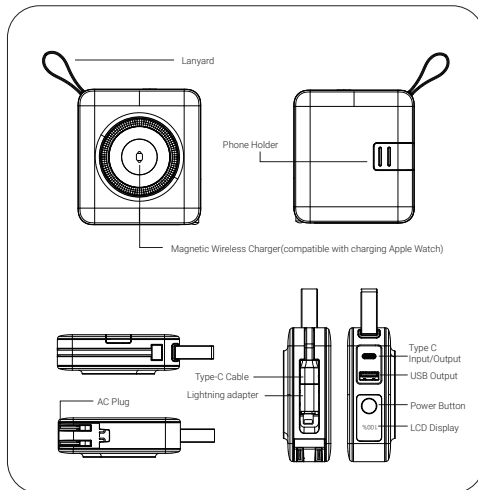
Global Travel Power Bank



User Manual

Imported & Distributed By Altronics www.altronics.com.au

Product Diagram



Product Parameter

Model: A0319A	Material: ABS+PC Fireproof
Capacity: 10000mAh@3.7V 37Wh	AC Input: 100~240V AC 50Hz/60Hz 0.3A(Max)
Type-C Input: DC 5V~3A, 9V~2A, 12V~1.5A	Type-C Output: DC 5V~3A, 9V~2.22A, 12V~1.67A
Type-C Wire Output: DC 5V~3A, 9V~2.22A, 12V~1.67A	Lightning adaptor Output: DC 5V~3A, 9V~2.22A, 12V~1.67A
USB Output: DC 5V~3A, 9V~2A, 12V~1.5A 18W Max	Wireless Output: 15W Max (2.5W Max for Apple Watch)
Size: 89mm X 98mm X 31.5mm	Adaptor Mode Output: 10W Max

WHAT'S INCLUDED

- 1 x Multi-function Power Bank
- 1 x AU Adapter Plug
- 1 x EU Adapter Plug
- 1 x UK Adapter Plug
- 1 x Carry Case

User Guide



Wall Charger



Phone Holder



Apple Watch Charger



Magnetic Wireless Charger

CHARGING YOUR DEVICES

Using the Power Bank to charge your devices.

Please use the below charging methods. You are able to charge multiple devices simultaneously.

1. Built-in Cable
2. USB-A Port
3. Type-C Port
4. Wireless Charger

Using as a pass-through Wall Charger

1. Pull out the Prongs (or connect an Adapter Plug. There should be a click when inserted fully).
2. Connect to a wall outlet.
3. Plug a cable into the the USB-A or Type-C charging port and into your device.
4. You can also use the Magnetic Wireless Charger whilst connected to a wall outlet.

Checking the Battery Level

1. Quick press the power button and the current percentage level will display on the digital screen.
2. Double click the power button or in standby for about 30 seconds, the display and power will be turned off automatically.

RECHARGING THE POWER BANK

There are two ways to recharge the internal battery:

1. Use the Wall Plug & and an AC Outlet
2. Use a Type-C to USB Cable connected to the Type-C Port.

WARNING

The power bank is NOT a toy and should be kept away from children.
Do NOT use the power bank in direct sunlight or extreme heat for extended periods of time.
Do NOT submerge the power bank in water.
Do NOT leave the power bank near the fire.
Do NOT subject the power bank to harsh chemicals.
Do NOT use the power bank if it has been damaged and/or modified.
Do NOT insert any foreign objects into the openings or port of the power bank.
Do NOT attempt to disassemble, repair, or open the power bank in any way.