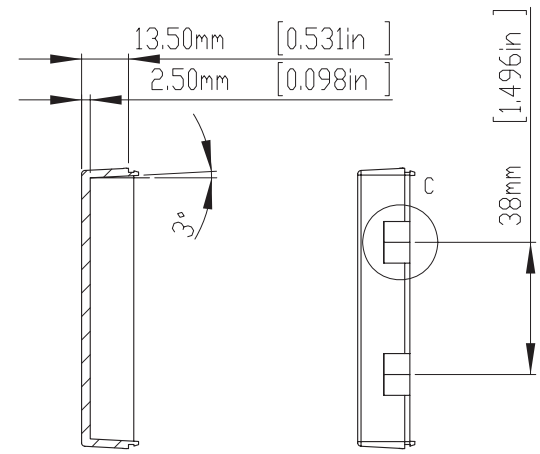
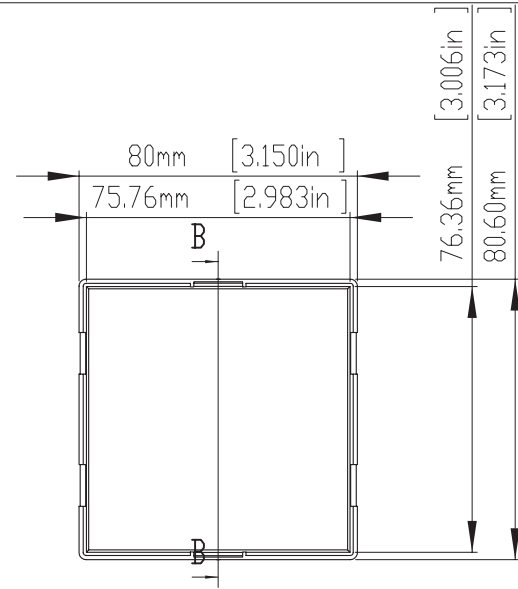
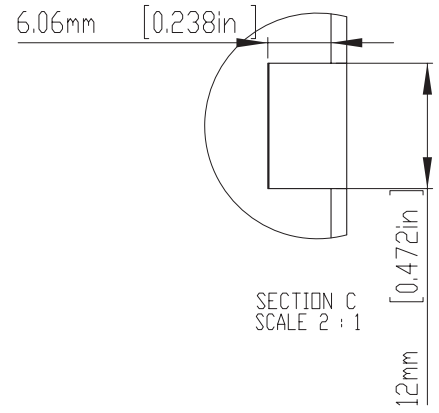


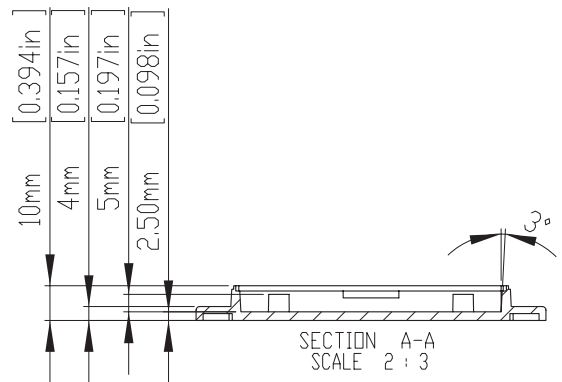
HOLES(4) ARE DESIGNED FOR M2.6X6mm SELF-TAPPING SCREWS USE.
 WALL MOUNTING HOLES(4) X DIA.4.5mm FOR PAN HEAD(M4) TAPPING SCREWS USE.



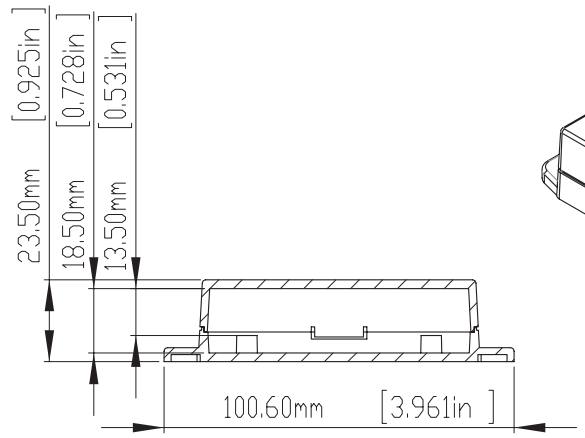
SECTION B-B
SCALE 2 : 3



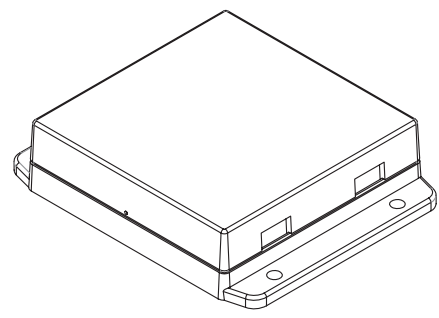
SECTION C
SCALE 2 : 1



SECTION A-A
SCALE 2 : 3



ASSEMBLY



According to ISO 2768-m		
Measuring DIM=L		Tolerances
0.5 < L ≤ 3.0 mm		±0.1 mm
3.0 < L ≤ 6.0 mm		±0.1 mm
6.0 < L ≤ 30.0 mm		±0.2 mm
30.0 < L ≤ 120.0 mm		±0.3 mm
120.0 < L ≤ 400.0 mm		±0.5 mm
400.0 < L ≤ 1000.0 mm		±0.8 mm

	DRA'D BY	DATE	MATE.	TITLE:	DWG NO:	REVISID:
		2013/10/01	ABS	NUB808023		A