

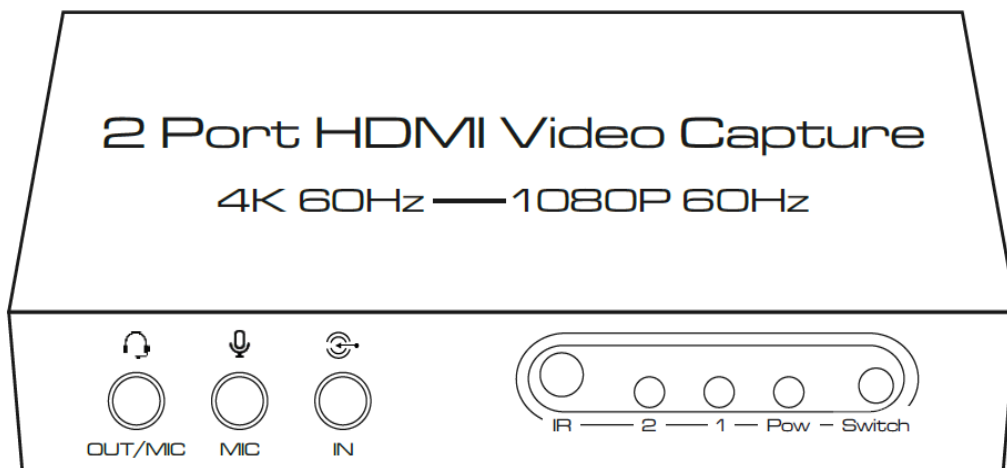
# User Manual

---

## 2 Port HDMI Video Capture

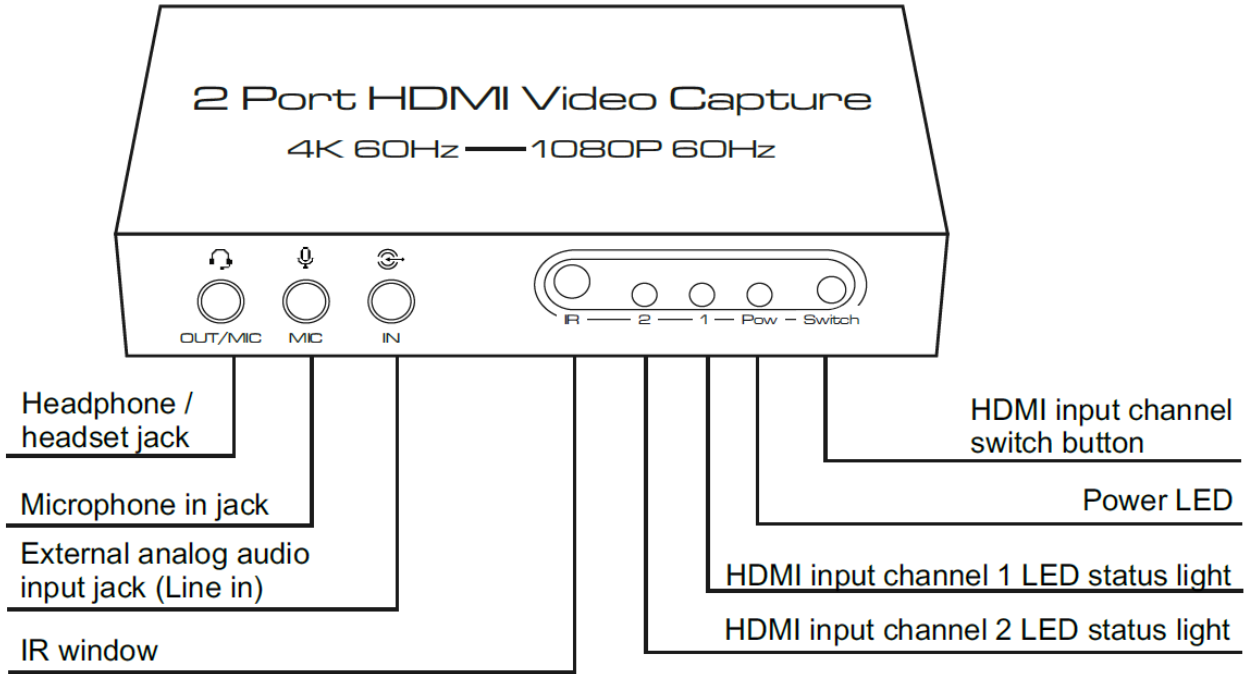
4K 60Hz-1080P 60Hz

Model No. AA6238

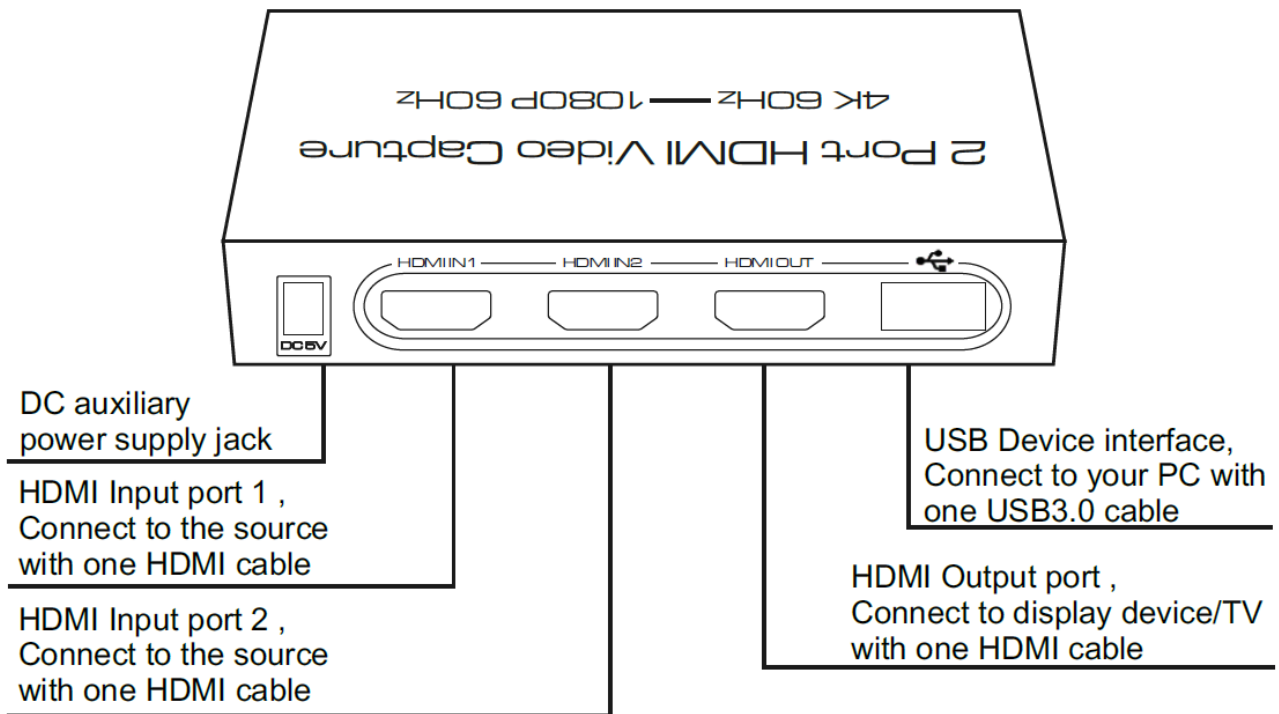


## FEATURES OF THE INTERFACE:

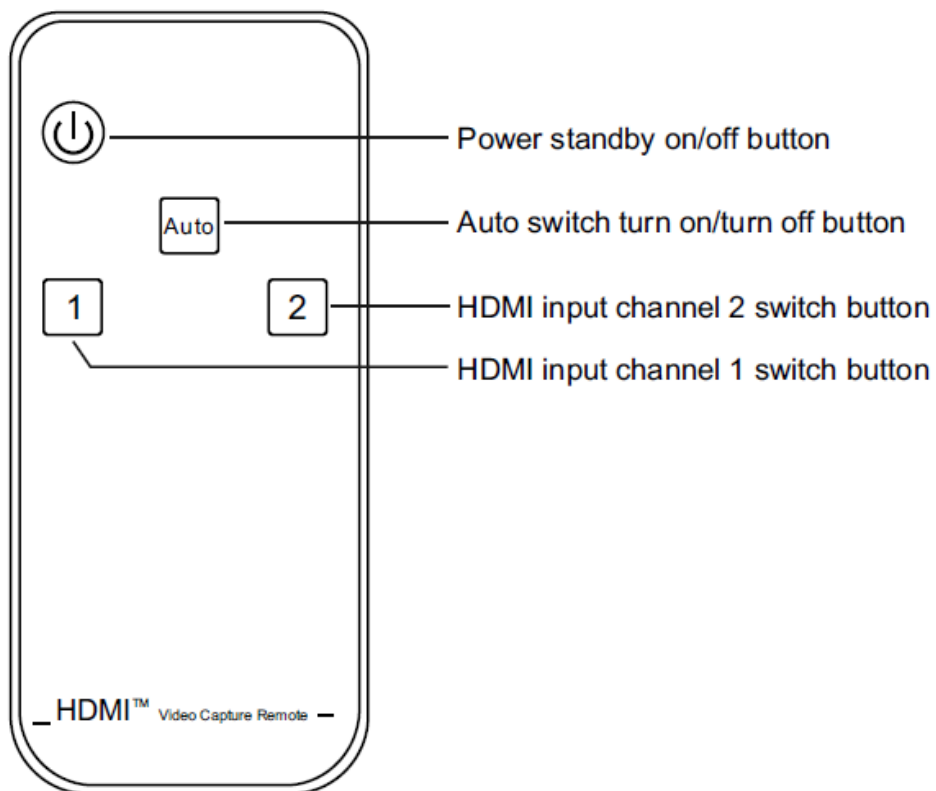
Picture 1.0 front panel showing



Picture 1.1 rear panel showing



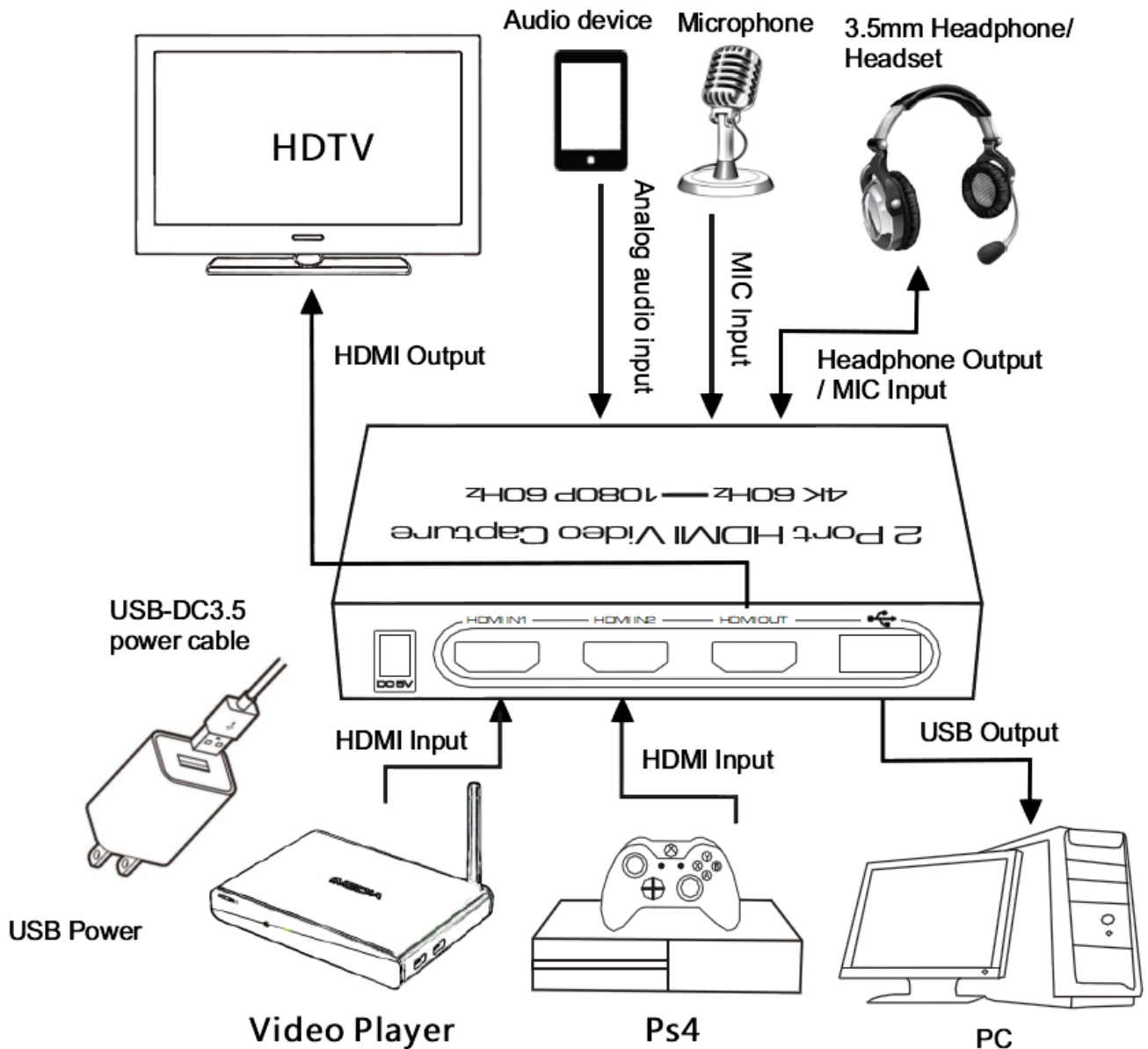
Picture 1.2 IR panel showing and function introduction



\* Please take out the film at the rear of the remote before you use. Please insert the film to remote rear if you do not use the remote for long time.

## Connection and Operation:

### 1. Connection diagram



## 2. Matters needing attention:

I . This product does not require an external power supply when connected to the standard USB3.0 interface (which can provide 1A current) of the computer. If connected to the USB2.0 interface of the computer or other conditions of insufficient power supply, must be connected to an external power auxiliary power supply, Auxiliary power must be supplied by the attached USB-DC3.5 cable at this point.

II . When the audio cable is inserted into the analog audio input port, USB output audio will give priority to analog input audio. If no audio input from the analog audio input port, the HDMI input audio will be selected.

III. This product supports mobile phone headset access, and the type of headset plug supported is 3.5mm plug of international standard (CTIA).

## 3. PC side hardware configuration requirements

Hardware devices	Recommended configuration
CPU	PC i5-3400 or above NB i7-3537U 2.0GHZ or above
Memory	DDR3 4G or above
Graphics card	PC NVIDIA GT630 or above NB NVIDIA GT735M or above
Hard disk	500G or above, SSD recommended

#### 4. PC side system & software requirements

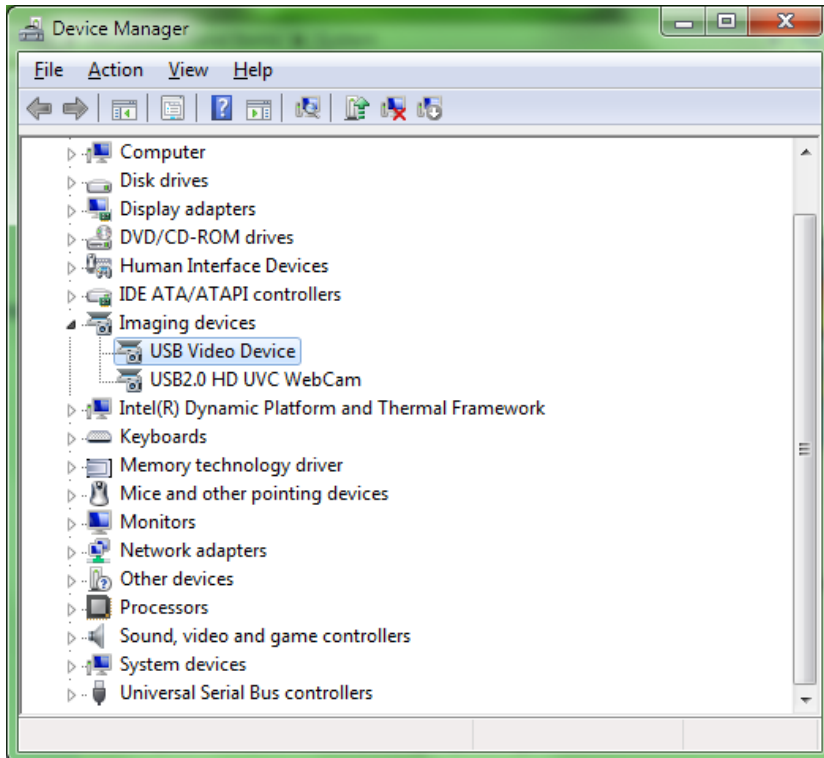
Type	Recommended version
Operating System	Windows XP/7/8/10 Andriod5.0 or above MacOS 10 or above Installation-free drive under normal conditions
Application	Support <a href="#">most video capture software</a> , such as PotPlayer, VLC, OBS, Amcap etc.

Note: The software copyright belongs to the third party company. Please use the licensed software, otherwise all the consequences caused are undertaken by its own users.

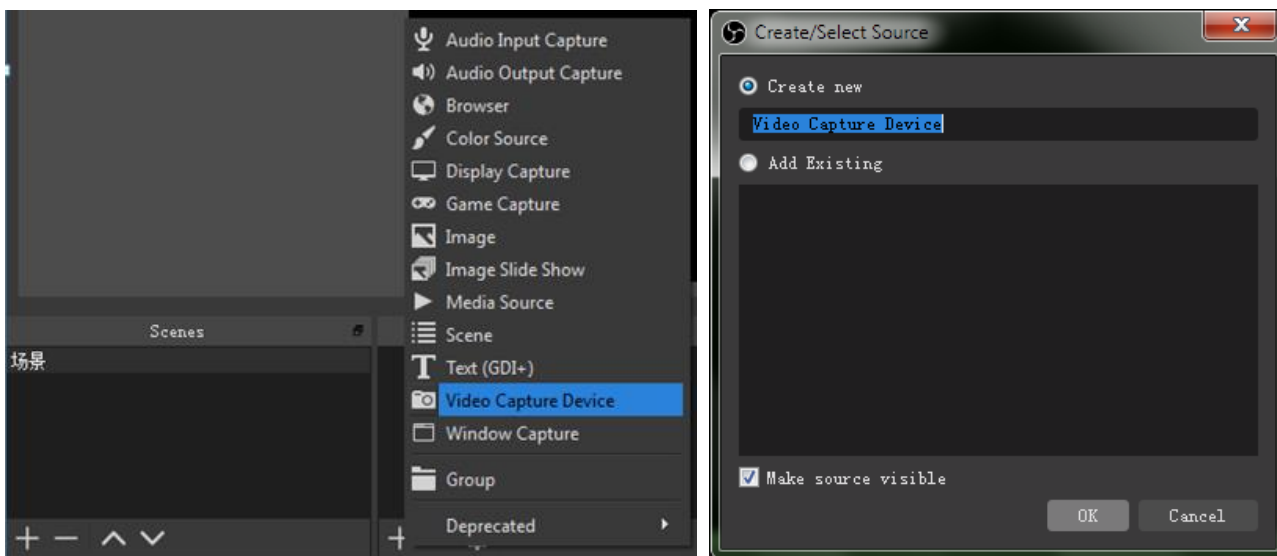
#### 5. Operation illustration

Operation Steps for video capture (Win7 and OBS for PC).

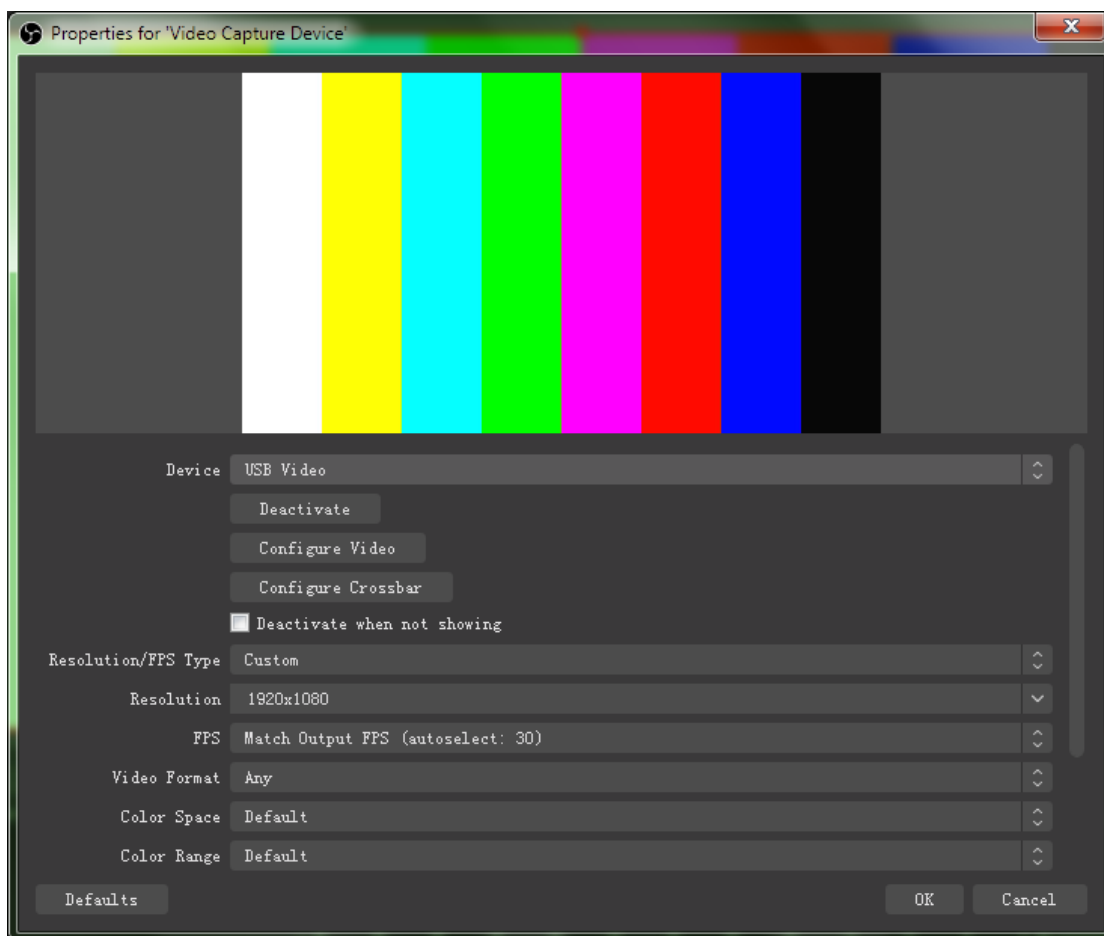
I . Insert the Capture into the USB port of the PC, Check device identification in Control Panel \ Device Manager \ Image Devices list.



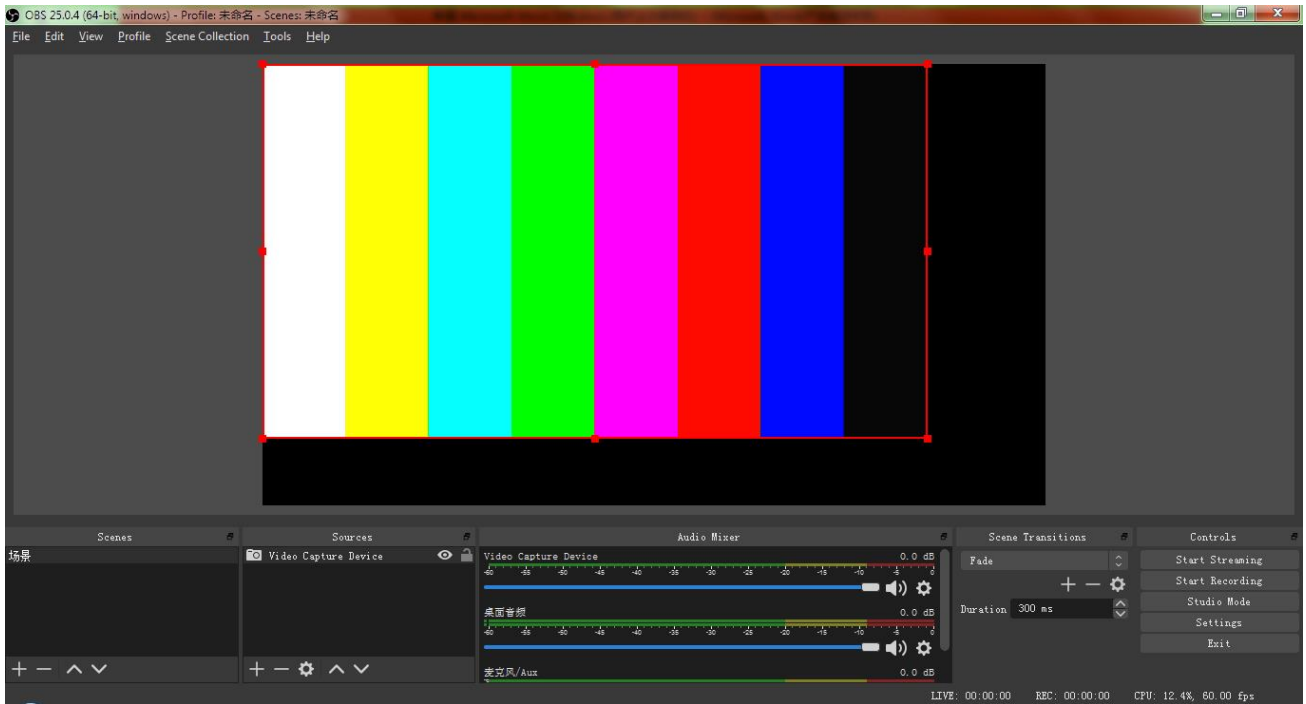
II. Open the OBS software and click the **+** button in the "Sources" control panel to add a video capture device.



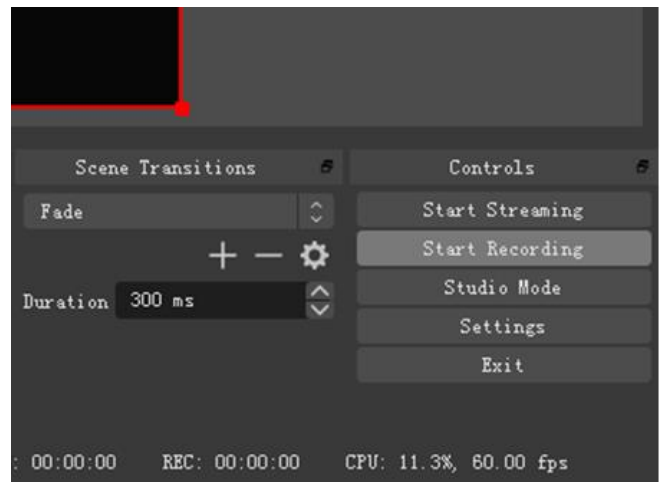
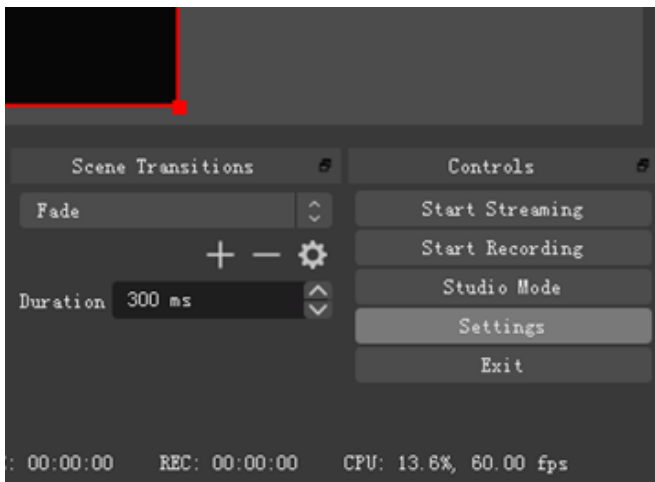
III. Select the capture device to preview the capture screen normally. Then click **OK**.



IV. Drag the red border to adjust the capture screen size.



V. Click **【Settings】** button in the lower right corner to enter the setting interface to set audio & video format, picture quality, output etc. After setting, click **【Start Recording】** button.



## SPECIFICATIONS:

Model No.	AA6238
Model name	2 Port HDMI Video Capture

Input ports	HDMI2.0 x2,LINE IN x1,MIC x1,DC3.5 x1
Output ports	HDMI2.0 x1,USB3.0 x1, Headset x1
HDMI video resolution	720P/1080P/2160P@24/30/50/60Hz
Audio format	LPCM2.0/32~192KHz/16/20/24Bit
Input color space	RGB、YUV444、YUV422、YUV420
HDMI video output resolution	3840x2160@60Hz Max.
Video capture resolution	1920x1080@60Hz Max.
Video output format	YUV or JPEG
HDMI input cable length	2160P/AWG 26 ≤5m or1080P/AWG 26 ≤10m
HDMI output cable length	2160P/AWG 26 ≤5m or1080P/AWG 26 ≤10m
Power supply mode	USB power supply / DC5V auxiliary power supply
Max working current	600mA
Working temperature range	-5 ~ +40°C
Working humidity range	5 to 85%RH (No Condensation)
Storage temperature	-15 to 55°C
Storage humidity	5 ~95%RH(No Condensation)
Size	111x53x21 (mm)
Weight	144g
Accessories	Manual x1, Remote ,USB-DC3.5 power cable x1, 3.5mm audio cable x1, USB3.0(Type A) cable x1