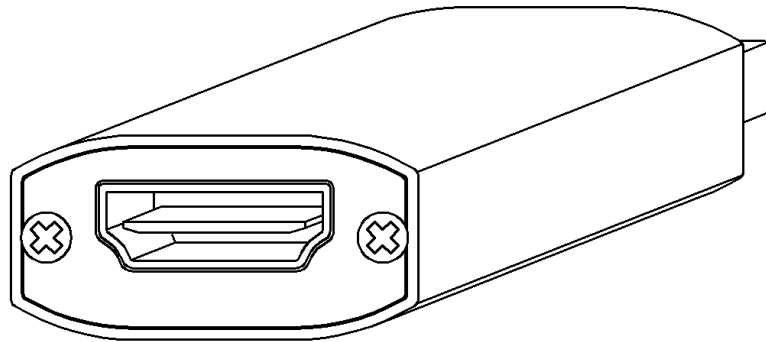


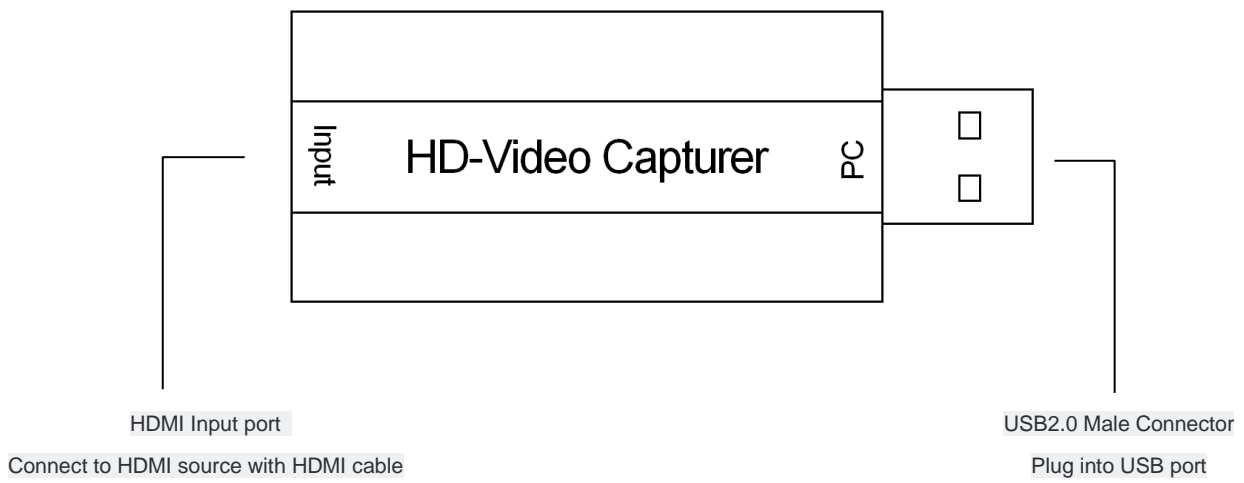
User Manual

USB 2.0 HDMI Video Capturer

Model No. AA6232

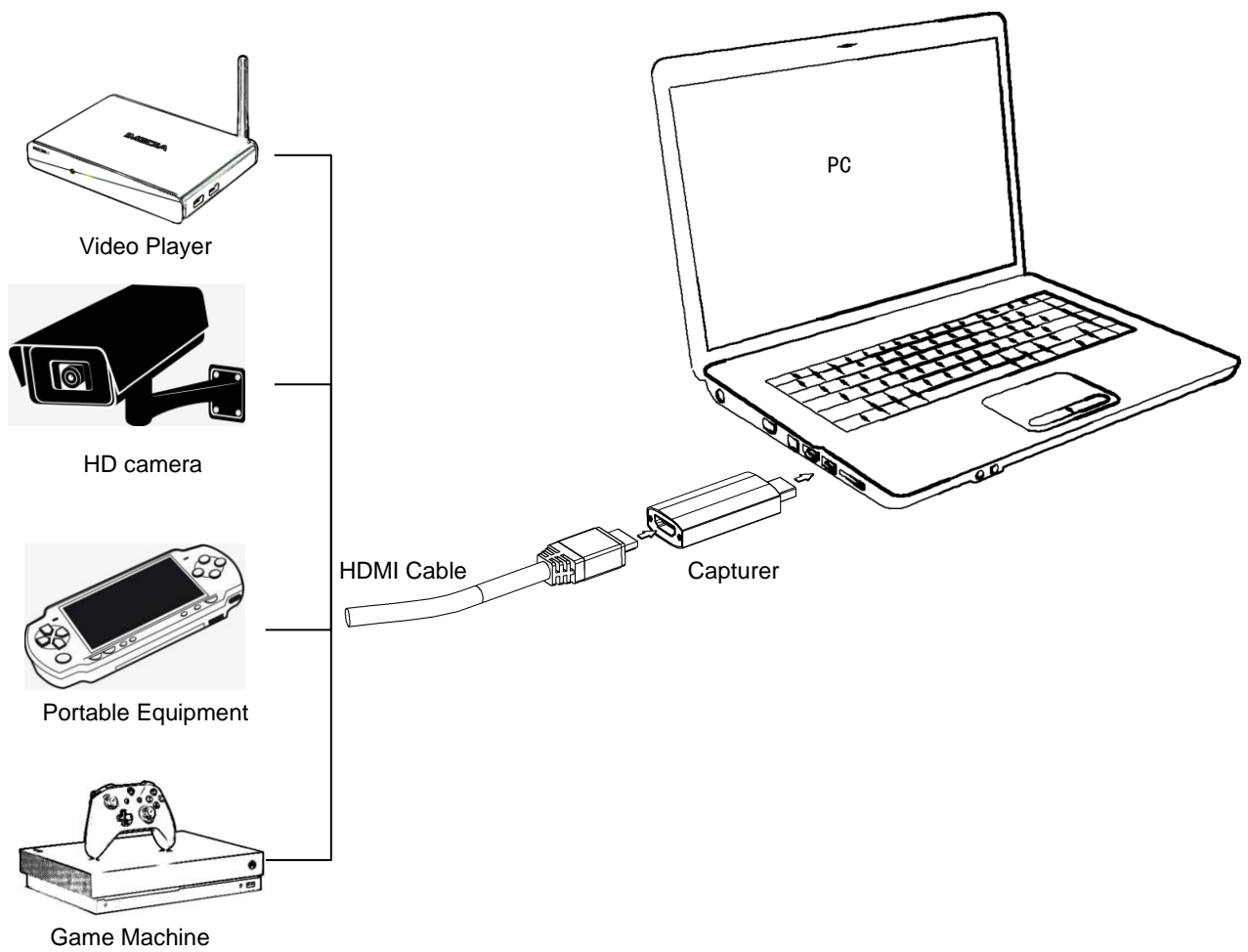


FEATURES:



Connection and Operation:

1. Connection diagram



2. PC hardware requirements

Hardware	Recommended Specifications
CPU	PC i5-3400 or above NB i7-3537U 2.0GHZ or above
Memory	DDR3 4G or above
Graphics card	PC NVIDIA GT630 or above NB NVIDIA GT735M or above
Hard disk	500G or above, SSD recommended

3. PC side system & software requirements

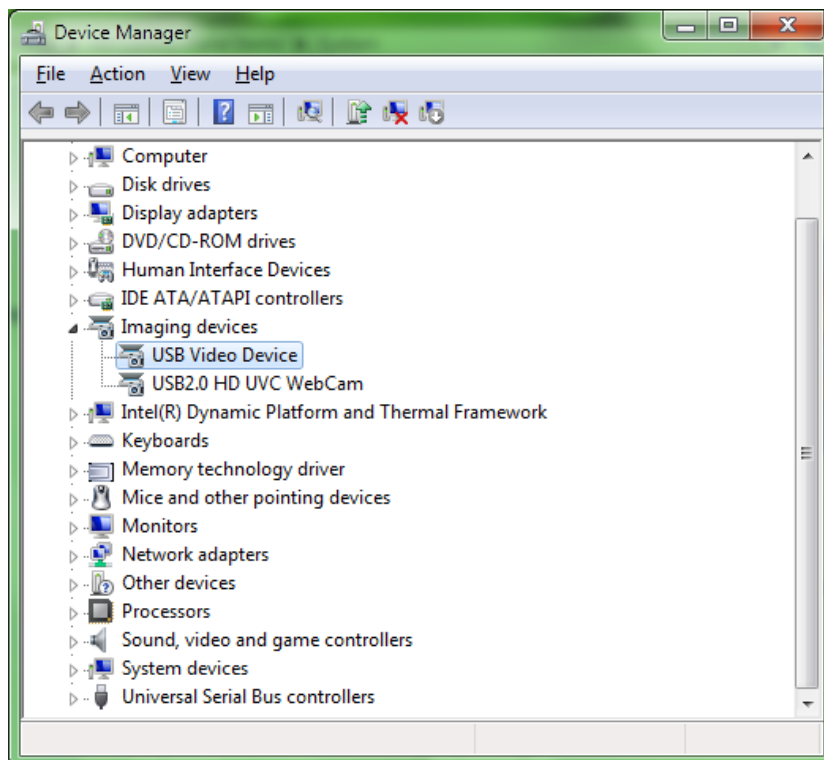
Type	Recommended version
Operating System	Windows XP/7/8/10 Andriod5.0 or above MacOS 10 or above Installation-free drive under normal conditions
Application	Support most video capture software , such as PotPlayer, VLC, OBS, Amcap etc.

Note: The software copyright belongs to the third-party company. It is recommended to use licensed software.

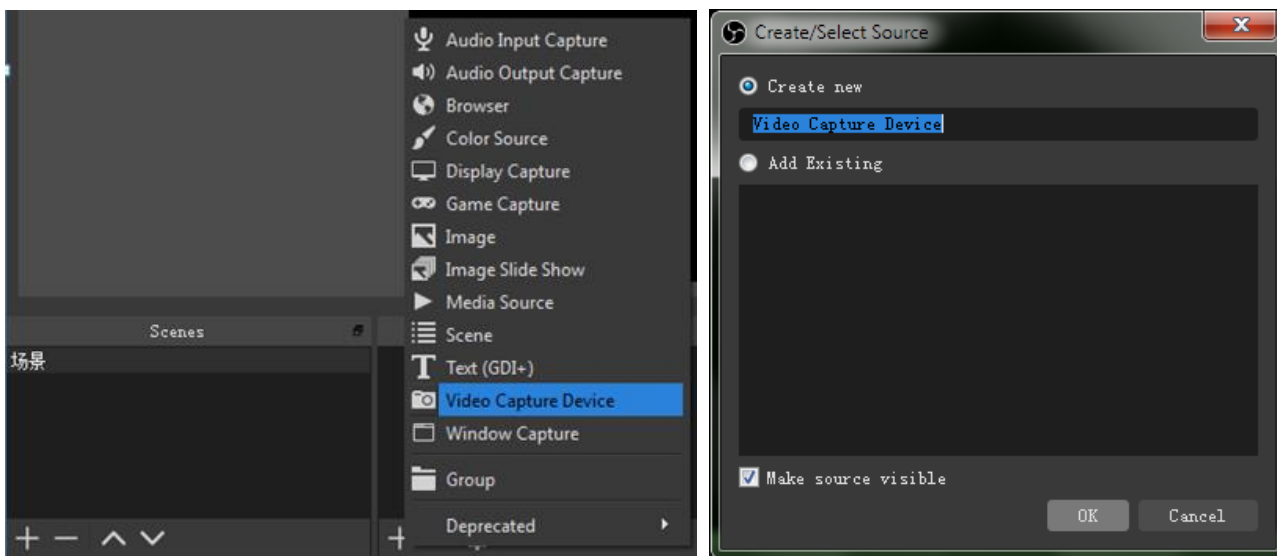
4. Operation illustration

Operation Steps for video capture (Win7 and OBS for PC).

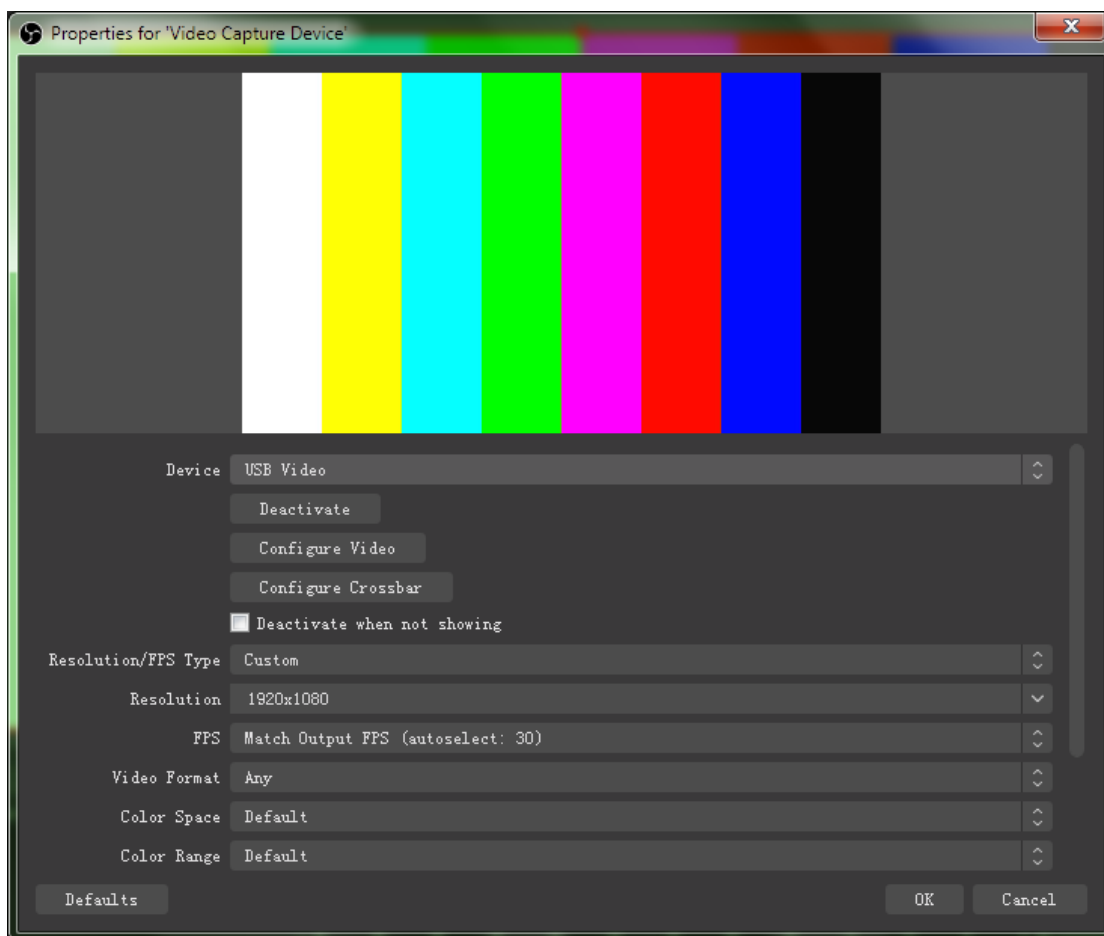
I . Insert the capturer into the USB port of the PC, Check device identification in Control Panel \ Device Manager \ Image Devices list.



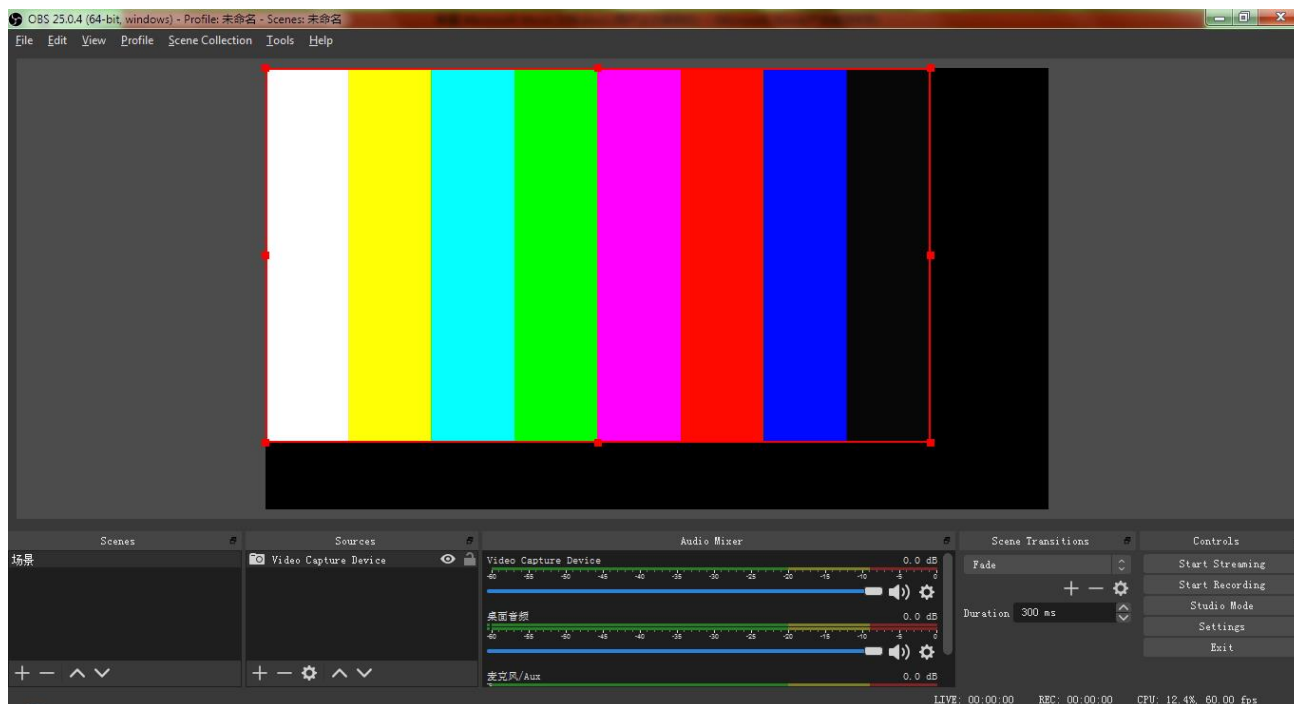
II. Open the OBS software and click the **+** button in the "Sources" control panel to add a video capture device.



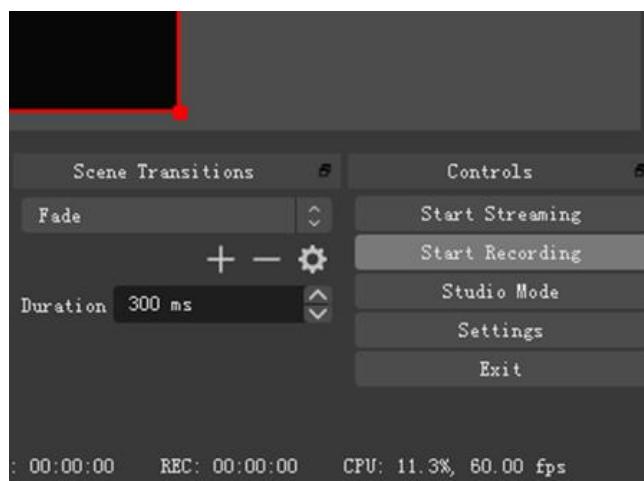
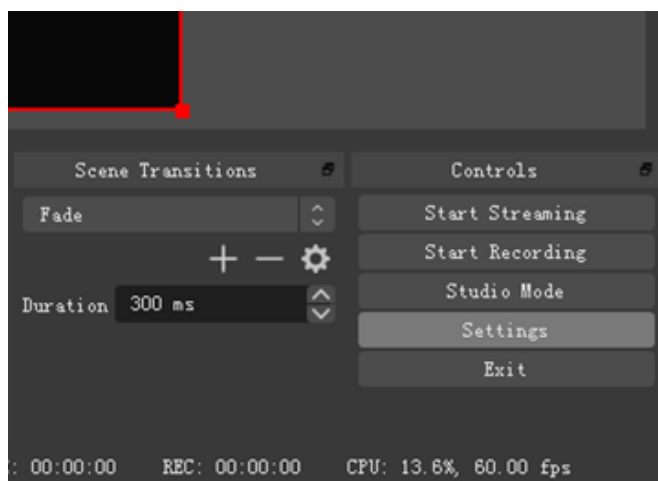
III. Select the capture device to preview the capture screen normally. Then click **OK** .



IV. Drag the red border to resize the capture screen.



V. Click **Settings** button on the lower right corner to enter the setting interface to set audio & video format, picture quality, output etc. After setting, click **Start Recording** button.



SPECIFICATIONS:

Model No.	HDCN0051M1
Model name	HD-Video Capturer
Input ports	HDMI1.4 x1
Output ports	USB2.0 x1
HDMI input resolution	3840x2160@30Hz or 4096x2160@24Hz Max Support 3840x2160@60Hz YUV420
Input color space	RGB、YUV444、YUV422、YUV420
Video output resolution	1920x1080@30Hz Max
Video output format	YUV or JPEG
Audio format	LPCM2.0/32~192KHz/16~24Bit
Input cable length	AWG 26 HDMI standard cable ≤10m
Power supply mode	USB power supply
Max working current	280mA
Working temperature range	-5 ~ +40℃
Working humidity range	5 to 85%RH (No Condensation)
Storage temperature	-15 to 55℃
Storage humidity	5 ~95%RH(No Condensation)
Size	67*26*13 (mm)
Weight	22g
Accessories	Manual x1