

U S E R M A N U A L

HDMI 4X1 Quad Multi-Viewer

Model No: AA6109

INTRODUCTION

Dear customer

Thank you for purchasing this product. For optimum performance and safety, please read these instructions carefully before connecting, operating or adjusting this product. Please keep this manual for future reference.

Our series of HDMI Converter, switchers, extenders, matrixes and splitters are designed to make your A/V installation more convenient, more productive and more cost-efficient.

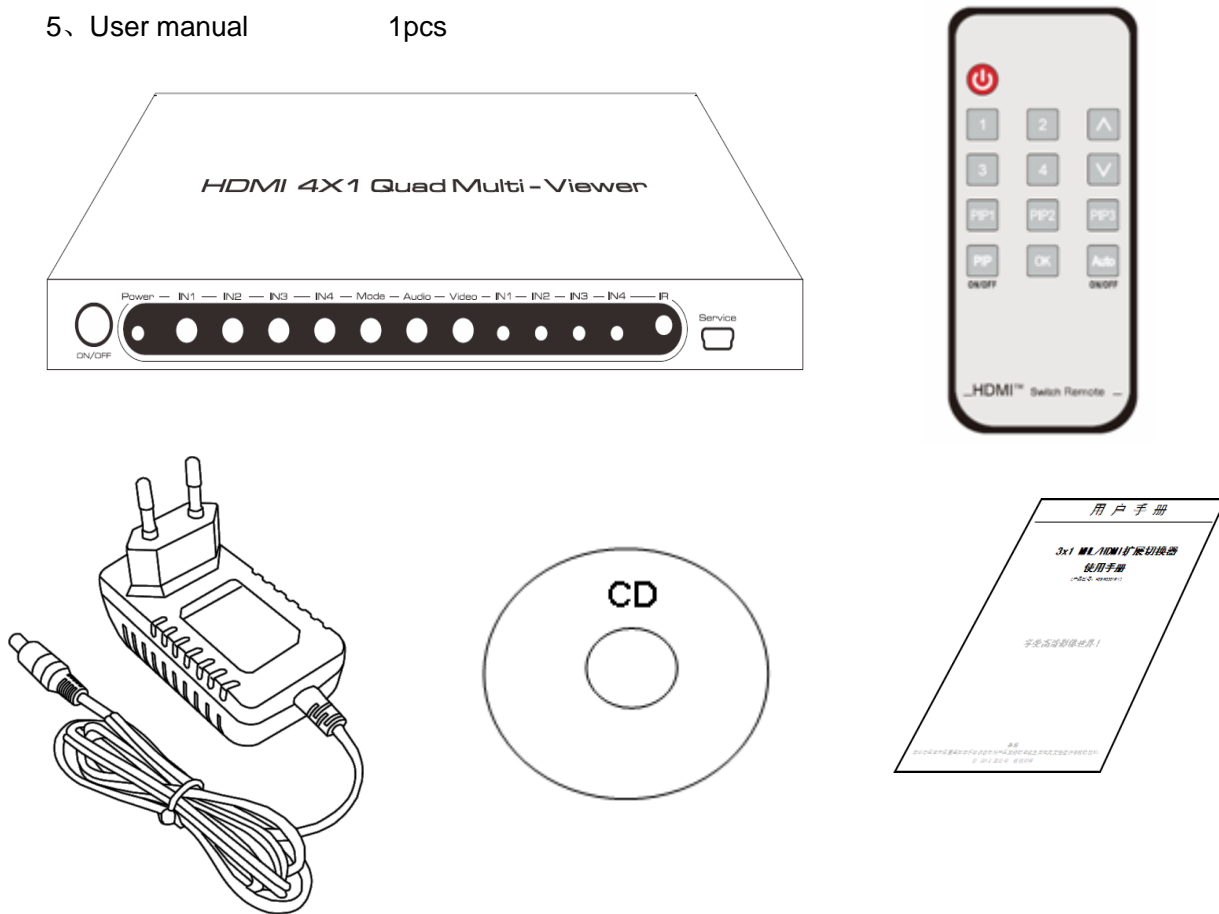
The device is a high-performance 4x1 Quad Multi-Viewer with seamless switcher, which allows four HDMI inputs to show at one HD Display simultaneously and support multi type of video splitter effect. It can switch seamless four HDMI inputs to one HD Display. The device can be controlled through the front panel button, IR Remote and RS232. It can be used for the gaming, security, Conference meeting rooms, etc.

FEATURES

- Four HDMI input signals switched to one single HDMI sink devices
- Support Four HDMI Input to one Quad Multi-Viewer
- Support Four HDMI Input Switch Seamless
- HDMI input resolution highest support: 1080P @60Hz resolution
- HDMI output resolution: 720P/ 60Hz. 1080P/ 60Hz;
- Support SPDIF Coaxial digital audio format: Dolby digital (AC3), DTS and LPCM2.0
- Support IR Remote Control and Push Button at device control.
- Support RS232 Control and the device can do software upgrade by the PC.
- LED indication: when source or sink is working, LED related will go bright.
- Led Status Light allows the user to know the working status easily.
- No loss of quality
- Installs in minutes
- Need DC12V/2A power supply

PACKAGE CONTENTS:

- 1、 Main unit 1pcs
- 2、 12V power adapter 1pcs
- 3、 Remote 1pcs
- 4、 1 x CD (Driver) 1pcs (RS232 control program)
- 5、 User manual 1pcs



Physical Connection Showing Picture:

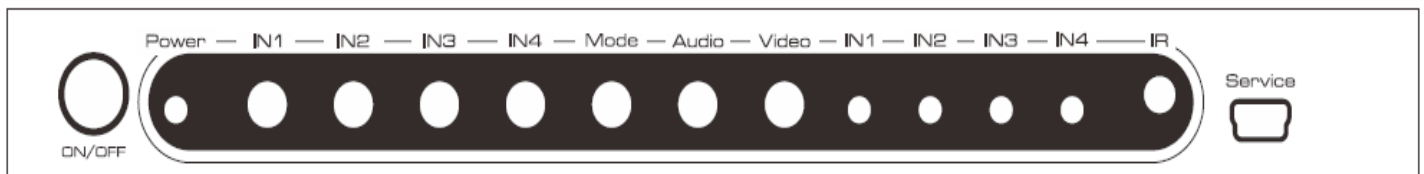


Figure 1.0 Front Panel Showing Picture

ON/OFF: Power On/Off Button

Power: Power LED

IN1-IN4: Input Sources Switch Button

Mode: Three View Mode Select Button

Audio: Audio Output Switch Button

Video: 720P/1080P Resolution Output Select Button

IN1- IN4: HDMI input led status light

IR: IR Receiver

Service: Mini USB Port (for software upgrade)



Figure 1.1 rear panel showing picture

HDMI IN 1- HDMI IN 4: HDMI input interface

HDMI: HDMI output interface

Coaxial: SPDIF/ Coaxial output ports

R232: RS232 communication port

DC 12V : 12V DC-DC Power Interface

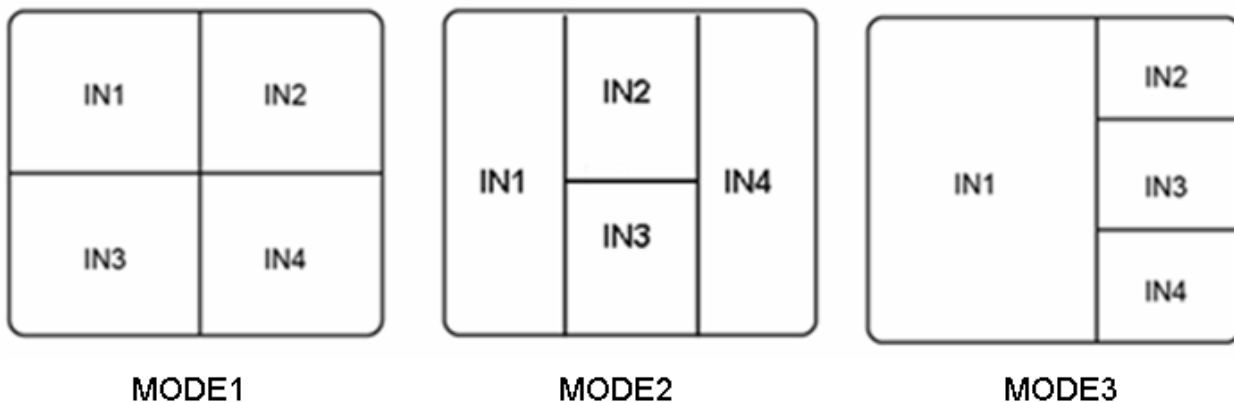
Press Button Introduction:

IN1-IN4 Button: HDMI Input Select Button; after press the button, it will output the selected HDMI input channel and also the matched LED light will go bright.

Audio Button: At Multi Picture showing state, it can do the select of the audio output by pressing the button.

Video Button: 720P/1080P Resolution Output Select Button

Mode Button: Three View Mode Select



MODE3: It can choose the any of the HDMI input as the Main Picture(audio and video simultaneously) by press the matched mode button.

Operating and Connecting:

1. To use one HDMI Cable connect the HDMI Output port of the HD Sources with the HDMI Input port of the device.
2. To use one HDMI Cable to connect the HDMI output port of the device with the HDMI input port of the HD Display.
3. To use one coaxial cable to connect the coaxial output port of the device with the coaxial input of the AV Receiver.
4. To use the attached 12V DC Power adaptor to connect with the DC 12V Port of the device.
5. To turn on the device by pressing the power ON/OFF button and then the matched led light will go bright.
6. To use the remote of the device or press the front panel button at the device to control the device and select the HDMI input channel and the view mode.
7. To use the RS232 to do control to the device.

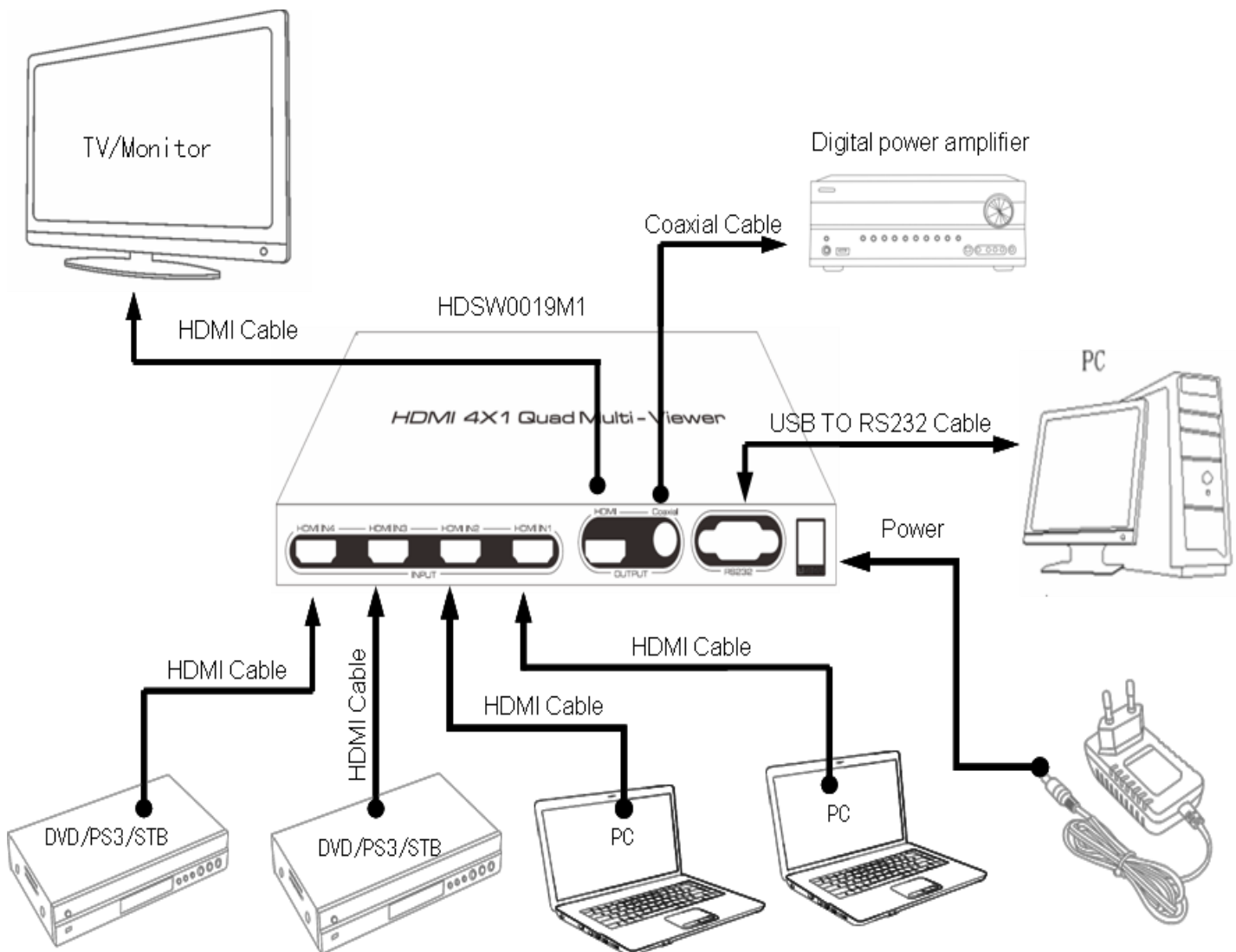


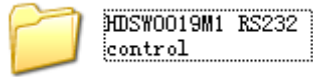
Figure 1.2 CONNECTION DIAGRAM

SPECIFICATIONS:

HDMI input resolution	1080p/1080i/720p/576p/576i/480p/480i
Max transmission bandwidth.....	225MHz
Max baud rate.....	6.75Gbps
Input/Output TMDS signal	0.5~1.5Volts p-p
Input/Output DDC signal	5Volts p-p (TTL)
Input cable distance.....	≤10m AWG26 HDMI standard cable
Output cable distance.....	≤10m AWG26 HDMI standard cable
Max working current.....	700mA
Power adapter format.....	Input: AC (50HZ, 60HZ) 100V-240V; Output: DC12V/2A
Operating Temperature range.....	0 to +40°C
Storage Temperature range.....	-15 to +55°C
Operating Humidity range.....	5 to 90%RH (No Condensation)
Storage Humidity range.....	5 to 95%RH (No Condensation)
Dimension (L x W x H)	220X87X23(mm)
Weight.....	443g

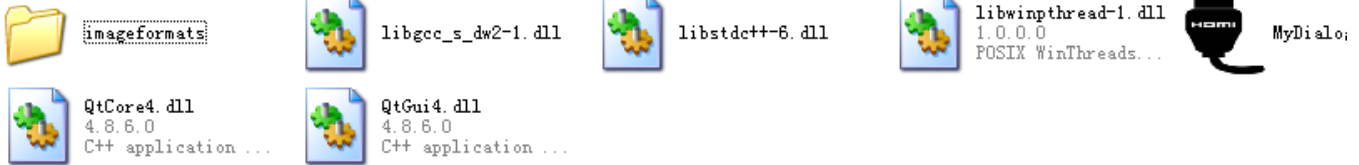
HDMI 4X1 Quad Multi-Viewer RS232 Operation Instruction

1、 To use one USB-RS232 convert cable to connect the USB Head of the cable with the USB port of the PC and connect the RS232 head of the cable with the Device RS232 Port.



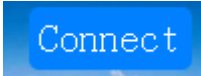
2、 To copy the file “ ” to the pc

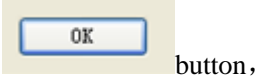
3、 open the file at pc and will find below info:



4、 Double Click “ ” Symbol, it shows as below:



4、 First step choose the matched COM port, second step click  button, third step click



One



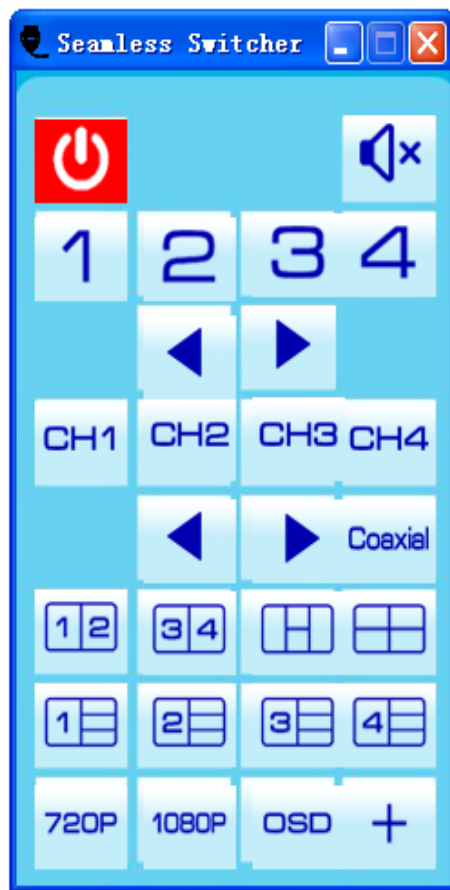
Two



Three



5. After all steps finished, the control menu will show as below and the control way is same as the remote.



IR Remote Operating Instruction



 : Power standby/Power on


 : Audio On/Off Button

1: Select HDMI IN1 for the input port

2: Select HDMI IN2 for the input port

3: Select HDMI IN3 for the input port

4: Select HDMI IN4 for the input port

 : Turn Up /down circulation switch input port

CH1: At multi-view mode, select the HDMI IN 1 audio as the output.

CH2: At multi-view mode, select the HDMI IN 2 audio as the output.

CH3: At multi-view mode, select the HDMI IN 3 audio as the output.

Figure 1.3 Remote Panel View

CH4: At multi-view mode, select the HDMI IN 4 audio as the output.

◀ ▶ : At multi-view mode, cycle audio switch button for up and down.

Coaxial: On/Off SPDIF Coaxial Audio Output Button, after you press the SPDIF coaxial audio button, the coaxial port will have audio out; press again the button, the coaxial port will no audio out.



: After pressing the matched button, it can select the working view mode.

720P: 720P Output Resolution Button

1080P: 1080P Resolution Output Button

OSD: On/Off OSD Function

+: On/Off “+” Function

(Note: Use after the battery separator film is pulled out)

Notes:

Pls use the machine as the instruction listed to keep the long use lifetime of the machine.

1. The machine should be placed at the spot far from the Damp, High-Temperature, Dusty, Erosive, and oxidative environment.
2. All parts will be free from the strong shake, hit, fall.
3. Touching the power adaptor with the wet hands is prohibited.
4. Pls hold the power adaptor head and do not pull the power cord when cut off from the socket.
5. Pls turn the power off when the machine is not used for long time.
6. Pls do not open the cover and do not touch the inside parts.
7. Pls use the original factory power adaptor.

Before power on, pls check the connection line carefully. And make sure that all interfaces are normally connected. The common trouble shooting way shows below:

Serial NO	Trouble Description	Cause and Ways to deal with
1	Non-Power-Connected	1、 Check if the power adaptor head is truly and correctly inserted the power socket. 2、 Check the power switch if it is in on status.
2	No Picture	1、 Pls to make sure that the TV is on and has been connected with the machine., 2、 To check if the signal source is on and well connected. 3、 Check the system connection quality. 4、 Check if the line is all good quality. 5、 Check the cable quality..
3	Obscure Picture	1、 To try again to connect the cable to be free from the unsuccessful connection. 2、 HDMI Cable Quality
4	Remote	1、 Pls check if the film that stops the current has been taken out. 2、 To check if the remote battery is working well.